



# SigNET Product Line

A range of scalable Hybrid control panels that are equally at home in residential environments, scaling to high-end commercial applications.

## Controller Range

**SigNET** is a true hybrid alarm system with 8 on-board wired zones and an on-board wireless gateway that communicates with intruder devices using the North American standard wireless frequency, providing greater security from interference and jamming. For larger applications the **SigNET** system components can be mixed and matched to expand both the wired and wireless zones. This offers unmatched flexibility in cost effective design and efficient installation with minimal wiring.

All panels supports "true" system partitioning that will enable multi area and multi tenant applications. Multi tenant systems have the capability to report multiple URN's to central station and enable private notification (SMS) to specific users. For added security the Web server access is also partitioned for each tenant based on authentication.

## User Interface

The keypad is an iconic 32 character text keypad that is modern, aesthetically pleasing and functionally advanced. A number of keypad options exist;

- Standard keypad
- Standard keypad with PACE (Card Reader for system control)
- Standard keypad with wireless gateway for wireless detectors.

## 100 Series

A domestic panel that supports 32 zones of wired or wireless devices.

- 32 users
- 4 keypads

## 200 Series

A commercial panel that supports 128 zones of wired or wireless devices.

- 16 users
- 16 keypads
- Optional Metal cabinet

## 300 Series

A commercial and domestic panel that supports 512 zones of wired or wireless devices. Supports IP connectivity as standard and has an in-built web server for configuration and user information. Interaction with the system is through the keypads or a web browser.

- 32 users
- 32 keypads

## Connectivity

Central station connectivity is a major part of a security system, The controller can connect to the central station using any of the communication methods (PSTN, GSM & Ethernet), and all the major communication formats are supported. If multiple communication paths are required the controller can be programmed to prioritize the communication channels based on a predefined strategy.



The SigNET Model circuitry, keypad and cabinet

**SigNET offers unmatched flexibility in cost effective design and efficient installation with minimum wiring**

**SigNET** supports full connectivity for the technician/user with secure authentication and rights management, via broadband / local area network or via data channel over GPRS / PSTN networks

## Configuration

With flexible communications the **SigNET** controller can be configured remotely through any of the communications channels using the on-board web browser or through the PC application. This remote programming facility minimizes expensive on-site technician costs and can provide a lower cost of ownership to the user. If off-site programming is not appropriate, a PC web browser can be used with a direct connection to the panel. The panel can also be set up using a preprogrammed configuration by plugging the Fast Programmer on to the controller. Technician friendly menus (based upon mobile phone structure) along with system templates makes the **SigNET** one of the quickest panels to program directly from the keypad.

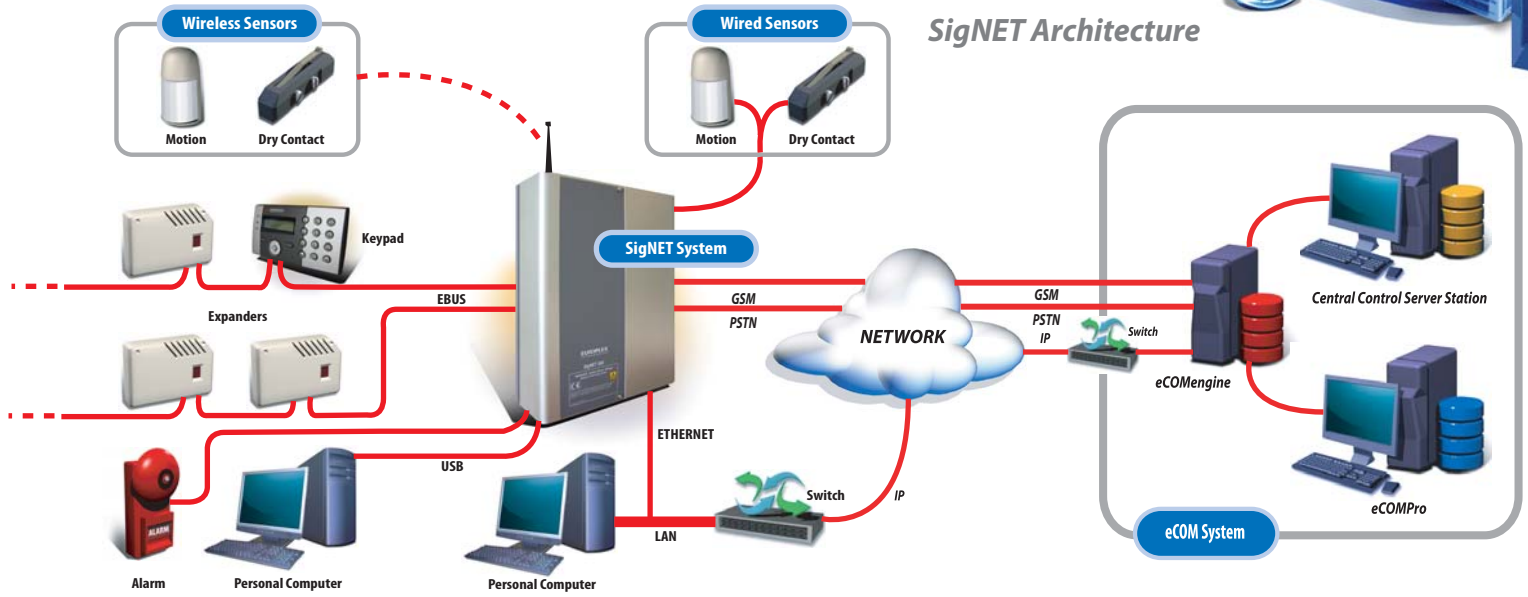
## Communications

All controllers support dual and tri-path communications (PSTN, GSM & Ethernet) allowing the most appropriate to be used for the application. All the communication modules are pluggable to allow any combination to be used. The controller supports remote connectivity over all communication options, to provide engineering functions including set up, configuration, remote diagnostics and to the user, the ability to remotely manage the premises.

SMS text messaging via GSM / PSTN modules enhances the ability to notify events and/or alarms to the user.

## Home Automation

Users can control individual X10 devices either locally or remotely through the web server. Each X10 devices can also be controlled automatically based upon system events. Single or groups of X10 devices can be directly controlled using the system keypads.



### Specifications

#### SigNET 100

#### SigNET 200

#### SigNET 300

#### System

Number of zones (Max.)*1	32	128	512
Outputs (Max.)	32	128	512
Number of keypads (Max.)	4	16	32
Keyfobs (Set/Unset/Panic) (Max.)	32	256	512
Number of Expanders (Max.)	3	32	64
Areas (Multi-Area / Multi-tenant) (Max.)	4	16	32
Number of users (Max.)	32	256	512
Event Log (shared across Areas)	1000	10,000	20,000

#### Controller

Number of on-board wired zones		8 (Supporting No EOL/ Single EOL/ Dual EOL/ Inertia Sensors)	
Wireless Gateway	Yes	Yes	Yes
1off Relay Output (strobe)	1A(resistive)	1A(resistive)	1A(resistive)
2off Bell Outputs (Int. & Ext.)		Int. 100mA(resistive) , Ext. 400mA(resistive)	
3off General Outputs	50mA(resistive) per output	400mA(resistive) per output	400mA(resistive) per output
Power Requirements		120Vac (fully monitored internal power supply)	
Languages	Single-language support	Multi-language support	Multi-language support

#### Communications

Modems (Pluggable)	PSTN / GSM *2	PSTN / GSM *2	PSTN / GSM *2
Reporting Formats		SIA, Scancom Fast Format, Contact ID, BTRedcare and SMS messaging	
Ethernet	No	No	Yes
Serial Interfaces (RS232)	1	2	2
USB Interface	1	1	1
Upload/Download	Local / Remote	Local / Remote	Local / Remote
Flash firmware upgrade	Local	Local / Remote	Local / Remote

\*2-System supports two modems simultaneously

#### Configuration

Upload / download software	Yes	Yes	Yes
Web Server	No	Yes	Yes
Fast Programmer	Yes	Yes	Yes

#### Expanders

8Inputs & 2 Outputs (Max.)	3*3	15*3	63*3
8Inputs & 2 Outputs (Max.) (Analysed Zones)	3*3	15*3	63*3
8Outputs (Max.)	3*3	15*3	63*3
Smart PSU 12V (Max.)	3*3	15*3	63*3
(3Aor 6Awith 8 Inputs & 8 Outputs)			
Wireless Gateway	Yes	Yes	Yes

\*3-Combination of Expanders cannot exceed the maximum for the controller

For more information:

Visual Defence Inc.

9225 Leslie Street, Suite 7, Richmond Hill, Ontario, Canada, L4B 3H6

Tel: 905. 731. 1254 Fax: 905. 731. 8748

Website: [www.visualdefence.com](http://www.visualdefence.com)

©2006 Visual Defence Inc. All rights reserved. Reproduction in whole or in part without written consent is prohibited. Design, features and specifications are subject to change without notice.